

DATE

PROJECT NOTES

**NERO Advanced Control Drivers dim to dark on 0-10V, DMX, and DALI control systems. Achieve complete dimming control to very low levels.**

- Incorporates EldoLED technology
- Dim-to-dark and precise control with very low flicker
- Wide compatibility with control systems
- NEMA3R option suitable for outdoors and wet locations



Lucetta Lighting	Model	Control	Voltage/Wattage	Junction Box Options
VIP	-	-	-	-
	NR	010	24V96W	-
		DMX		(Driver with indoor J-Box) 3R
		DALI		(Driver with outdoor J-Box)

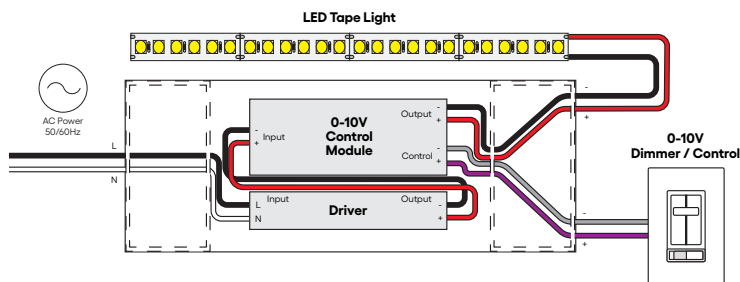
Example: VIP-NR-010-24V96W

24V Drivers				
		NR-010	NR-DMX	NR-DALI
Controls	Control Protocol	0-10V	DMX	DALI version-1, Device Type 6
	Dimming Range	100% - 0.1%	100% - 0%	100% - 0.1%
Input	Voltage	120/277V		
	Current (Full Load)	1.05A		
	Efficiency / Power Factor (max)	>.9		
	Wire or Terminal Connection	Wire		
Output	Voltage (Full Load)	24VDC		
	Max Current (Full Load)	4A		
	Power (Wattage)	96W		
	Wire or Terminal Connection	Terminal		
	# Output Connections	1		
Environment	Ambient Temperature	-4 - 122°F (-20 - +50°C)		
	Operating Temperature	-22 - 158°F (-30 - +70°C)		
	Location	Indoor (Nema1)		
	Location	Outdoor (Nema3R)		
	Working Humidity	5 - 95% RH non-condensing		
	Class 2 Compliant	Yes		
	Housing / Cooling	Convection cooling		
Junction Box Dimensions	J-Box	13.50 x 4.50 x 2.38 in. (L x W x H)		
	NEMA3R	10.79 x 7.34 x 2.36 in. (L x W x H)		
Additional Information	Safety Standards	UL Listed E469769		
	Protections	Auto Reset Hiccup		
	Dimmable	Yes		
	Minimum Load	None		
	Maximum Load	96W		
	Warranty	5 Years		

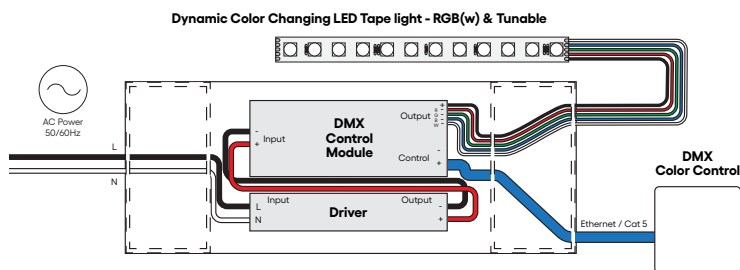
**System Diagrams**

These diagrams are examples only. Always install in accordance with national and local electric codes.

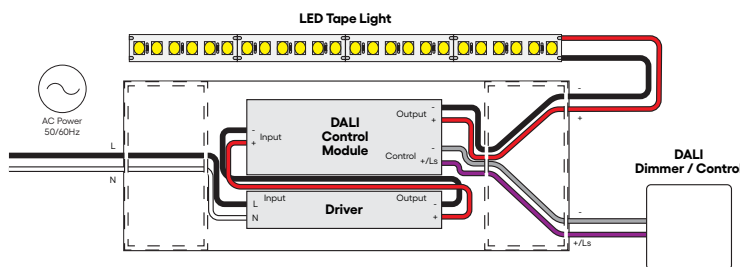
**0-10V Control System Diagram**



**DMX Control System Diagram**

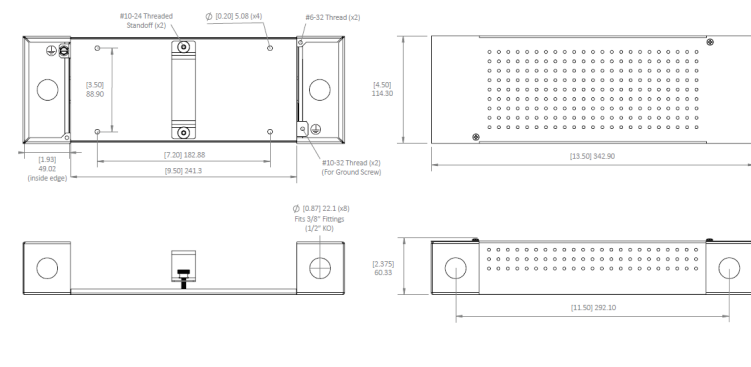


**DALI Control System Diagram**

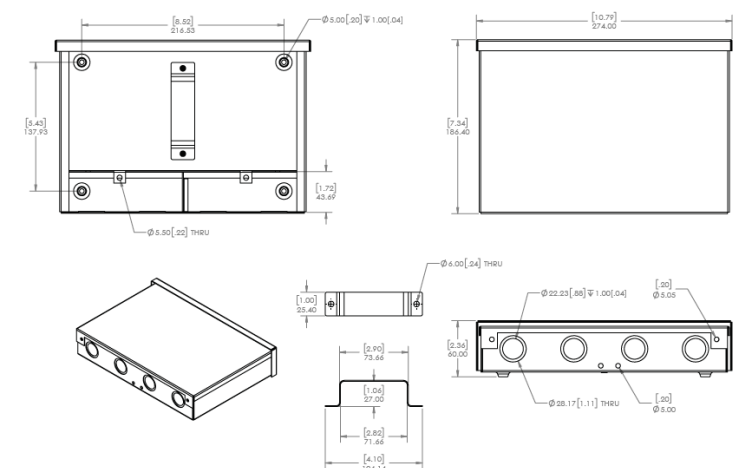


**Mechanical Diagrams**

**Junction Box**



**NEMA3R Junction Box**



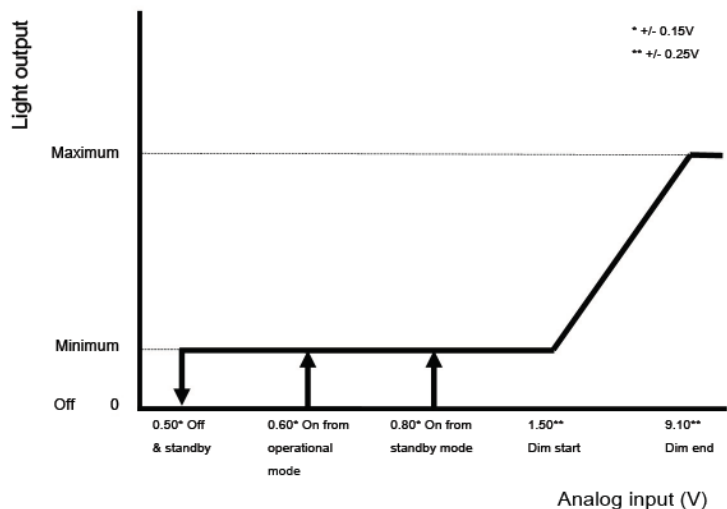
**Note<sup>1</sup>** Do not install product in an environment outside the listed ambient temperature. Ensure adequate airflow and heatsinking is considered when mounting/installing. Exceeding the maximum ambient temperature may damage LED chips by reducing the total lamp life, lumen output, and/or adversely impact color consistency.

**Note<sup>2</sup>** Operating temperature is measured according to the minimum and maximum ambient temperature environment.

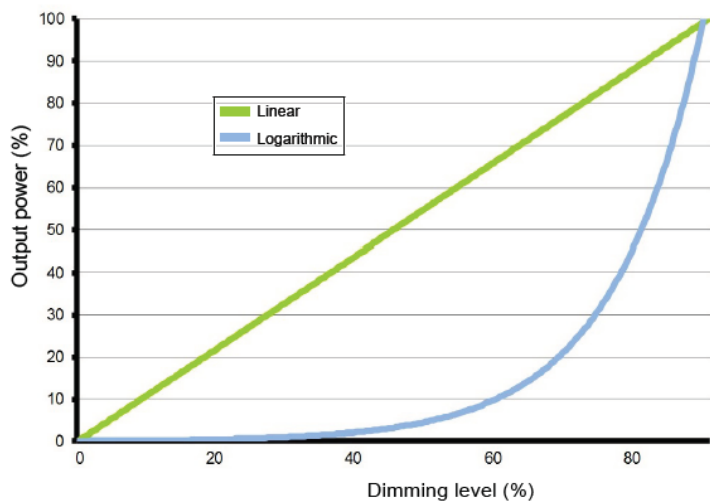
**Note<sup>3</sup>** When installing in ambient temperatures that may reach over 100°F, refer to the 'Derating Curve' to avoid overheating and damage to the driver.

## Dimming

0-10V Dimming Chart

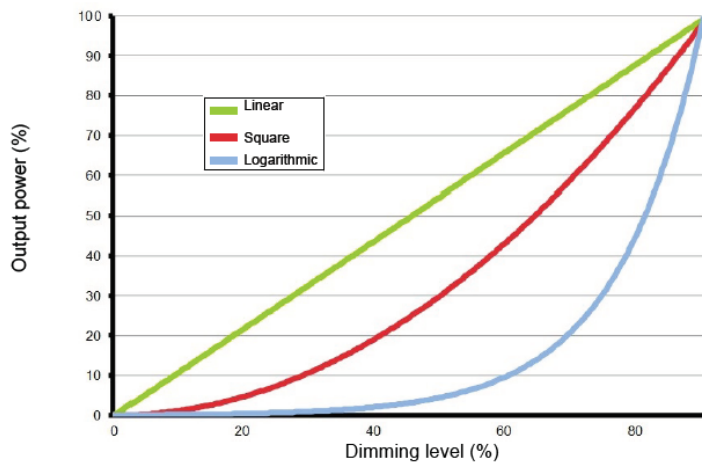


0-10V Dimming Curves

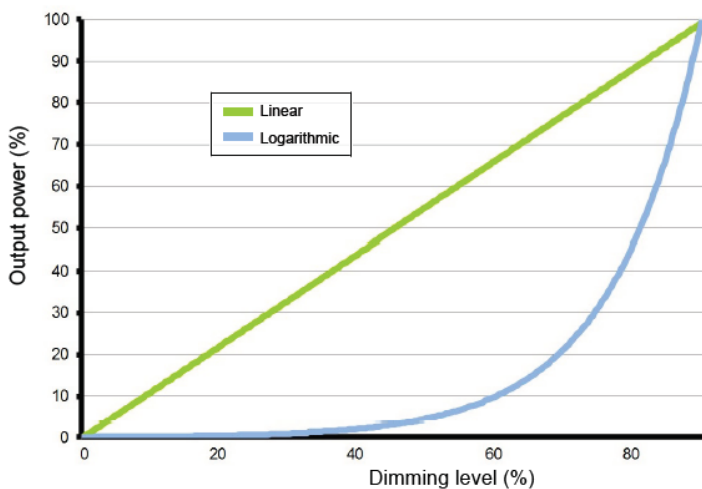


## Mechanical Diagrams

DMX Dimming Curves



DALI Dimming Curves



### Safety / Warnings / Disclosures

1. Install in accordance with national and local electrical code regulations.
2. This product is intended to be installed and serviced by a qualified, licensed electrician.
3. Not for use in or on walls of pools, fountains, or other partially or fully submersed locations.
4. Do not modify or disassemble product beyond instructions or this warranty will be void.
5. Actual color may vary from what is pictured above and on other print materials due to the limitations of photographic processes.
6. We reserve the right to modify and improve the design of our fixtures without prior notice. We cannot guarantee to match existing installed fixtures for subsequent orders or replacements in regards to product appearance, CCT, or lumen output.

### Limited Warranty

- 5 Years

This warranty does not include the additional accessories referenced in this specification sheet. Complete warranty details for fixtures and additional accessories are available at <https://lucettalighting.com/limited-warranty/> within the Policies section. For warranty related questions please contact product support.

### Consumer's Acknowledgment

Elemental LED, Inc. stands behind its products when they are used properly and according to our specifications. By purchasing our products, the purchaser agrees and acknowledges that lighting design, configuration and installation is a complex process, wherein seemingly minor factors or changes in layout and infield adjustments can have a significant impact on an entire system. Choosing the correct components is essential. Elemental LED is able to work with the original purchaser to make an appropriate product selection to the extent of the limited information that the customer can provide, but it is virtually impossible for Elemental LED to design a system that foresees every unknown factor. For this reason, this Warranty does not cover problems caused by improper design, configuration or installation issues. Any statement from a Elemental LED employee or agent regarding a customer's bill of goods and/or purchase order is NOT an acknowledgment that the products purchased are designed and configured correctly. The purchase agrees and acknowledges that it is the customer's responsibility to adhere strictly to all information contained in the Product Specification Sheets.

There is often more than one way to design, configure and layout an LED lighting application properly to achieve the same lighting effect. Elemental LED strongly recommends that licensed professionals be used in the design and installation of lighting systems that include Elemental LED products. The specifications include important information that a designer and installer should carefully review and strictly follow. Qualified designers and certified and/or licensed installers, with access to the final installation environment, customer goals, and Elemental LED product specifications can make the requisite decisions appropriate for a successful finished lighting application.